

The Wobbly Horse

And Cautions For Humans Around Them

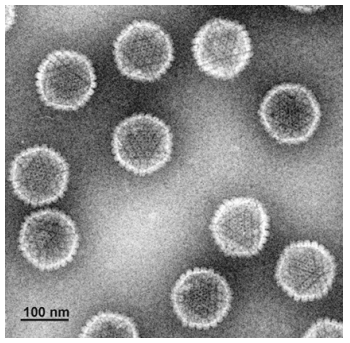
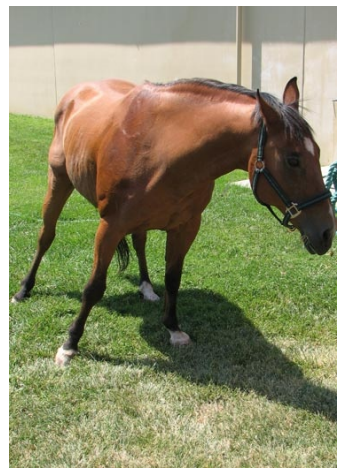
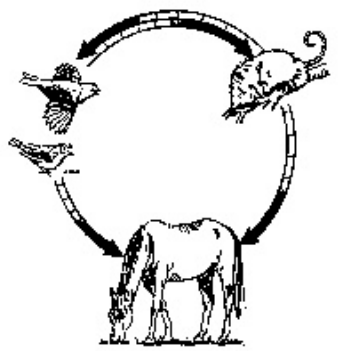
CAUSES NOT INFECTING HUMANS

- EPM (equine protozoal myeloencephalopathy)
- ELEM ("moldy corn poisoning")
- EHV (herpes virus "rhino")

Decrease your risk...

Reduce mosquito habitat

Avoid interactions with wildlife



Office of the State Veterinarian
602.542.4293
www.azda.gov
www.RoamingTheRange.com

SOME CAUSES THAT CAN INFECT HUMANS

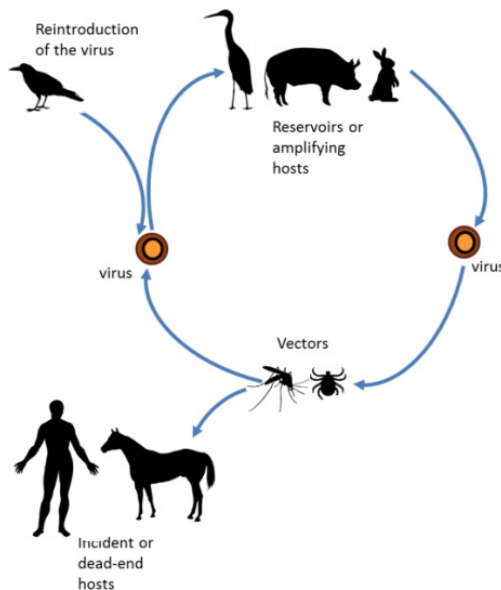
- Rabies
- West Nile Virus
- Western Equine Encephalitis
- Venezuelan Equine Encephalitis
- (foreign animal disease)



Each of these animals can play a role in your horse becoming infected with a neurological disease...



Promptly contact your veterinarian if your horse shows signs of neurological disease!



... and with you becoming infected as well.



Possible Signs of Neurological Disease

- * Horse hesitates or steps awkwardly
- * Horse stumbles or drags toes
- * Horse staggers, weak, or wobbly
- * Horse is down and can't rise

Effective Vaccines Are Available!